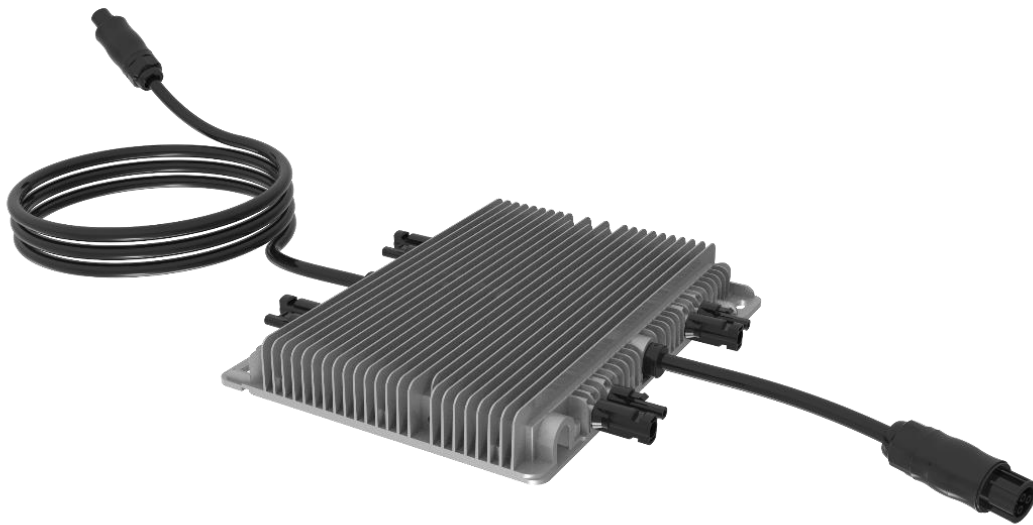


# Technical data

## Microinverter Series 1600 and 2000



MICROINVERTER FOR UP TO 4 PV MODULES



MAXIMUM CUSTOMER SATISFACTION



PLUG & PLAY



# Microinverter Series 1600 and 2000

## Technical Data

	MIS 1600	MIS 2000
<b>Input data (DC)</b>		
Recommended Input Power (STC)	210 – 600 W	
MPPT Voltage Range	25V – 55V	
Operation Voltage Range	20V – 60V	
Maximum Input Voltage	60V	
Maximum Input Current	12.5A x 4	
Maximum DC Short Circuit Current	16A	
<b>Output Data (AC)</b>		
Peak Output Power	1600 W	2000 W
Maximum Output Power	1760 W	2200 W
Maximum Output Current	7.7 A	9.6 A
Nominal Voltage / Range	230V / 184 – 265 V	
Nominal Frequency / Range	50/60 Hz	
Extended Frequency / Range	45-55 Hz / 55-65 Hz	
Power Factor	>0.99	
Maximum units per branch	4	3
Max. Allowed Altitude Operation	< 4000 m	
Max. Inverter Backfeed Current to Array	0 A	
Maximum Output Fault Current	10 A	
Max. Output Overcurrent Protection	7.7 A	9.6 A
<b>Efficiency</b>		
Maximum Inverter Efficiency	96.5%	
Weighted CEC Efficiency	95%	
Static MPPT Efficiency	99%	
Night Power Consumption	50 mW	
<b>Mechanical Data</b>		
Operating Ambient Temperature Range	-40°C .. +65°C	
Dimensions (W x H x D)	267mm X 300mm X 42.5mm	
Weight	5.2 kg	
Protection Class	Class I	
Enclosure Rating	IP67	
Cooling	Natural Convection – No fans	
<b>Features</b>		
Compatibility	Compatible with 60, 72 cell PV modules	
Communication	Wi-Fi	
Certificates	EN50549, VDE0126, VDE4105, IEC62109, CE, INMETRO	
Warranty	10 years	

CAUTION: READ THE INSTRUCTION AND INSTALLATION MANUAL BEFORE USING THE PRODUCT.

© Copyright 2020. All rights reserved. The specifications of the data sheet can be changed without prior notice.

